

The barSTOCK Exchange Package



The barSTOCK Exchange Package

Hardware Requirements

barSTOCK is a Windows based software program designed to run on versions 95 upwards (Windows 98 or Windows 2000 is recommended). In the standard version only one PC is required along with a double VGA graphics card. We recommend either PNY:

<http://www.pny.com>

or Matrox product

<http://www.matrox.com>

Using these special graphics card the computer screen/ Windows desktop is extended over two screens. The main barSTOCK control software, the Exchange Manager, runs on the left screen controlling the price movement, POS communication and effects; the Multi-Media price display or TV overlay software runs on the right half of the desk-top. The right half of the screen is then projected onto the TV screens around the venue. This configuration is more practical and cheaper than using 2 PC's (network connected) and allows direct control of the barSTOCK Exchange on the left, leaving the right TV image undisturbed running on the right.



The software can normally be installed on a current back-office PC. However during barSTOCK operation it should be completely dedicated to the barSTOCK Exchange operation. If electronic display boards are used, COM1 and/or COM2 must be free; therefore a bus mouse is recommended.

The barSTOCK Exchange Package

The hardware minimum requirements for the barSTOCK is a Pentium II 200MHz with 64MB RAM, CD-ROM and 2Gbyte hard disk.

The software is extremely easy to use and offers a wide range of functions and features, including a versatile advertisement facility for displaying text, Bitmap images and AVI video files.

Installation

The barSTOCK software is shipped on a CD-ROM with a fully automated installation procedure, which includes the PoS interface. Assuming that your PC is already equipped with a special double VGA graphics card, installing the software and configuring the cash-desk interface takes no longer than one hour.

The till/cash-desk/EpoS system dealer will have detailed instructions on how to configure the EPoS terminal to interface smoothly with the barSTOCK software. All that is left to do is to enter the listed products used in barSTOCK and to make certain that their article numbers (PLU's) are identical to those on the PoS system.

Some barSTOCK screen shots....



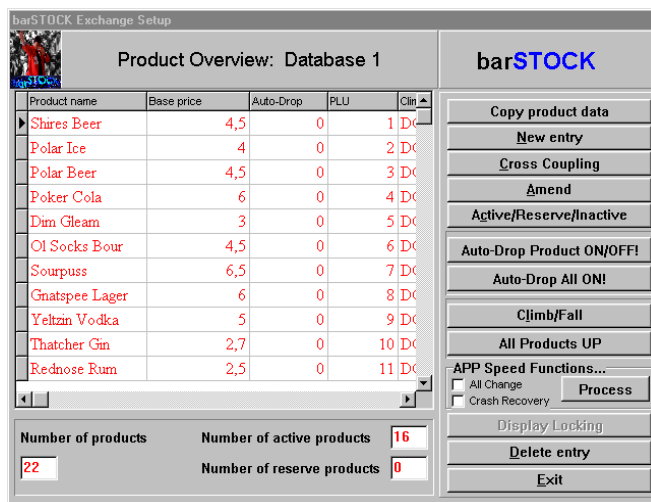
The Exchange Manager

The barSTOCK Exchange Package



TV Product price display

The barSTOCK Exchange Package



Product Maintenance

Optional hardware extras

8 Channel relay box

Driven from the parallel port of the barSTOCK PC, this box allows external hardware such as lasers, strobes, sound effects and other audio-visual effects to be controlled by the barSTOCK Exchange Manager.

Each channel can be individually programmed to flash or run constantly, and can be triggered by the four main stock market events:

1. Exchange start
2. Prices change
3. Price crash
4. Exchange close.

Remote Crash Trigger

A small hand-held switch with key-lock (to prevent unauthorised use) allows the DJ or bar manager to trigger a crash at the "right" time.

Display Hardware

LED matrix Display boards. To achieve the maximum Stock Market effect electronic display boards can also be supplied in all shapes and forms to suit any location.

The barSTOCK Exchange Package



the new Millenium! Everybody will want to join the Stock Ma

tcher G3.10^{+0.70} Rednose R0.00^{+0.70} Aztequila 5.40

TV/Price Overlapping using the Crawl-Text generator



The barSTOCK Exchange Package

Crawl-text Generator

For those venues that wish to have sport or other TV programmes running along with the Stock Market, super-imposed crawl text hardware is available. This allows up-to-the-minute product information (current price and tendency) to be blended in across the bottom on the TV screen

